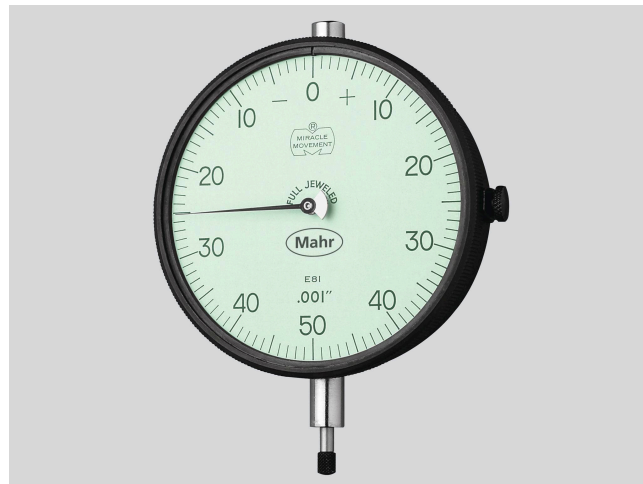


# Informations produit

## Comparteur montre mécanique MarCator 42I

### Propriétés du produit

- Unit construction and removable movement save repair/cleaning time and maintenance
- Hardened gears and stainless steel racks provide lasting protection against indicator failure due to shock or wear
- Jeweled bearings resist friction, add to longer indicator life
- Skeletonized, hobbled gears for more sensitive response, superior indicator accuracy with minimal hysteresis error
- Soft tinted dials (green - inch / yellow - metric) minimize eye strain
- Special steel alloy
- Balanced dial hand affords no shift, precise reading
- Controlled rack and pinion mesh eliminates slope for precise response and reading
- Smooth adjusting bezels for easy setup
- Positive pressure pull back spring requires less maintenance
- Compliance with ANSI/AGD dimensional and accuracy specifications
- These indicators are normally furnished with continuous dial (with R.C.) or + on right balance dial (w/o R.C.), lug back and .18" by .250" long contact
- Optional Dials: balanced dial with + on left; continuous clockwise; continuous counterclockwise. (Order by part number and specify dial style desired)
- For other dial styles or special requirements - call Mahr



Référence : 2011060

### Caractéristiques techniques

|                  |           |
|------------------|-----------|
| Capacité en inch | 0.03 inch |
|------------------|-----------|

### Dimensions

|                               |        |
|-------------------------------|--------|
| Dimension B en pouces (texte) | 2,563" |
| Dimension A en pouces (texte) | 3,625" |
| Dimension D en pouces (texte) | 0,625" |
| Dimension C en pouces (texte) | 3,438" |
| Dimension E en pouces (texte) | 0,344" |

